

GESTIÓN HUMANA Y DESARROLLO ORGANIZACIONAL INVITA A:

Historia del arte y desarrollo humano

Actividades y cultura para el bienestar

CON PROFESORES DEL DEPARTAMENTO DE HISTORIA DEL ARTE
DE LA FACULTAD DE ARTES Y HUMANIDADES



Jueves 17 de marzo

**Pandemias a través de la historia y del arte:
una oportunidad para la creatividad en
medio de la dificultad**
Con **Patricia Zalamea**



Miércoles 14 de abril

**Visita virtual: "Conoce la colección de
cerámica prehispánica más importante de
Colombia. Visita al museo arqueológico
MUSA (antiguamente Casa Marqués de San
Jorge)"**
con **Alexander Herrera**



Miércoles 19 de mayo

**Visita virtual: Museo Nacional
del Prado: las imprescindibles**
con **Dario Velandia**



Miércoles 16 de junio

**Charla: "Libretas, cuadernos y bitácoras:
usos y funciones en la ciencia y en el arte"**
con **Verónica Uribe**



4:00 p.m.



Regístrese en
facart.es/hart-ghdo

Pandemias a través de la historia y del arte: una oportunidad para la creatividad en medio de la dificultad.

Patricia Zalamea
pzalamea@uniandes.edu.co
Facultad de Artes y Humanidades
Universidad de los Andes

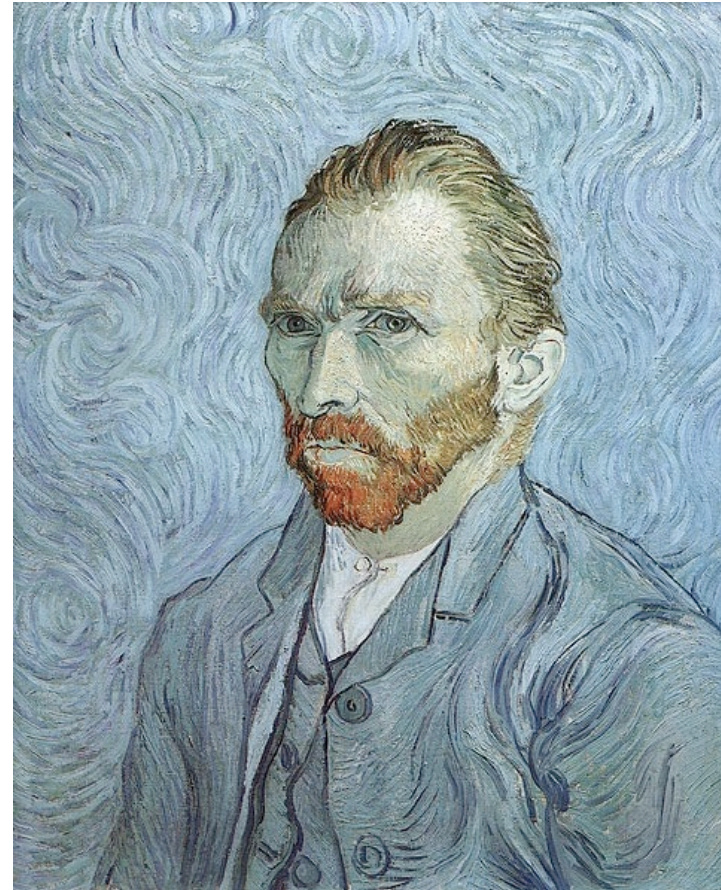


Temas

- Arte y crisis: “el arte no es amigo de la comodidad”.
- Algunos puntos de partida para pensar en “nuestra” pandemia.
- Tener perspectiva histórica:
 - ¿Por qué importa y para qué estudiar el pasado?
- Una línea de tiempo de pandemias que nos han transformado:
 - Pandemias históricas y sus consecuencias
 - Grandes innovaciones y obras que nacieron en pandemia
 - Puntos comunes entre pasado y presente
- Respuestas creativas a la pandemia del 2020-2021.
- Aprender del pasado es transformar el futuro.

Arte y crisis: “el arte no es amigo de la comodidad”

Gwen John
(1876-1939)
*Una esquina de
la habitación de
la artista en
París*
1907-1908
Óleo sobre tela
46,3 x 41,1 cm
Museums
Sheffield

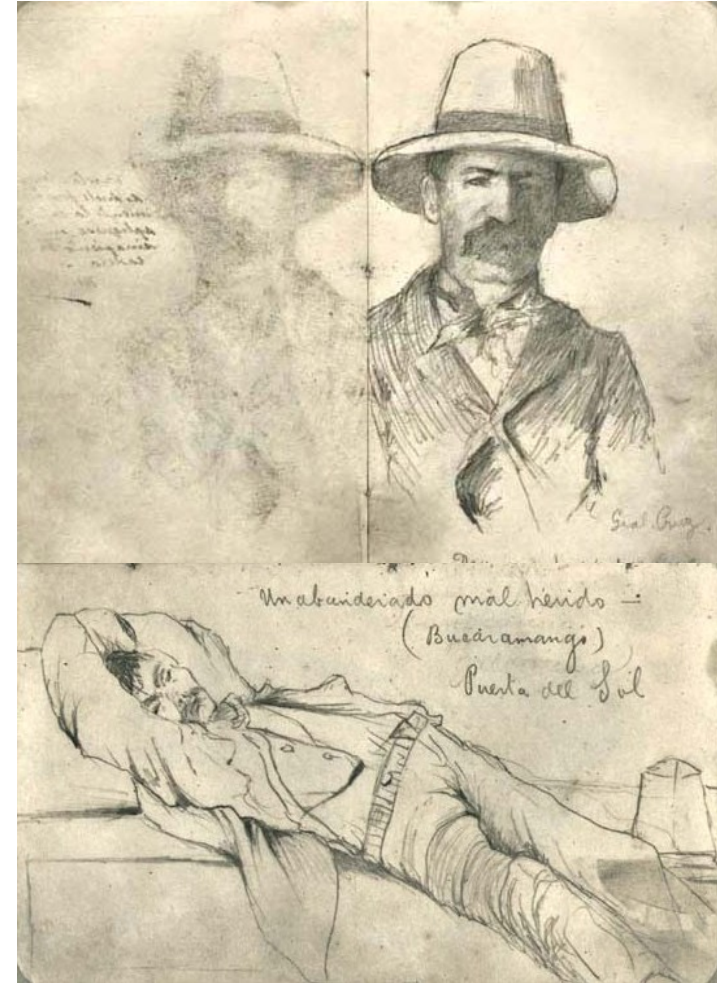


Vincent Van Gogh
(1853-1890)
Autorretrato
1889
Óleo sobre tela
París, d'Orsay

“El pintor que no vea ningún mundo dentro de sí mismo
que deje de pintar.” - Caspar David Friedrich



Peregrino Rivera Arce
Álbum de dibujos
Recuerdo de campaña
Bucaramanga 4 de enero de
1900
Museo Nacional de Colombia



Celda de la antigua
Penitenciaría de Cundinamarca
(1874-1946), actualmente
Museo Nacional de Colombia





Pintura rupestre
Parque Arqueológico
Piedras del Tunjo
Facatativá, Colombia
Ca. 10.000 a.C.



Pintura rupestre
Cueva de Pech Merle, Lot, Francia
Ca. 22.000 a.C.



Algunos puntos de partida

- De epidemia a pandemia: desbordamientos
- Formas de protección:
 - Cuarentena (viene de *quarantino*, 40 días)
 - Aislamiento físico (primera legislación en el siglo 14 con resistencia de la población)
 - Vestuario: legislación, debates (libertades vs bien común)
- Relación ser humano – naturaleza:
 - Cambio a la vida agraria (hace 10.000 años)
 - Revolución industrial (siglo 19)
 - Expansión de la vida urbana (siglos 20-21)



MUSEO DE BOGOTÁ

museodebogota 18h

LA CIUDAD ALEGRE Y GRIPADA



Aspecto de una de las calles de Bogotá, vista por LAPIZ, durante el periodo agudo de la epidemia.

Biblioteca Nacional de Colombia,
Bogotá Comico, 2 de noviembre de 1918.





Inglaterra, 1920

Fuente: <https://www.history.com/news/flu-masks-protection-photos#&gid=ci025cc549b0002738&pid=gettyimages-2660331>



China, 2020

Fuente: <https://www.japantimes.co.jp/news/2021/01/16/asia-pacific/china-covid-19-outbreak-imported-cases/>



Inglaterra, 1920

Fuente: <https://www.history.com/news/flu-masks-protection-photos#&gid=ci025cc549b0002738&pid=gettyimages-2660331>



MASCARILLAS CON FILTRO NEMOCÓN PÍXELES PRIMAVERA + 30 FILTROS

Colombia, 2020

Fuente:

It Must Go
ar the Top
 more Fourth
 by Loan Bonds
 Initial Payment
 will carry you for
 one
 we days more.
 in at once!
 sh our friends to
 best; we know
 no slackers
 hem.

**AMERICAN SAVINGS
 BANK & TRUST CO.**
 SECOND AVENUE AT MADISON

**Get
 Kidney Trouble**
 first signs of Bladder irritation
 or Backache

**INFLUENZA VEILS
 SET NEW FASHION**

Seattle Women Wearing Fine
 Mesh With Chlorine Border to
 Ward Off Malady.

Seattle women are wearing fine mesh veils with a chlorine border to ward off influenza. The veils are made of fine mesh and have a border of chlorine. They are worn over the face and are held up by a clip. The chlorine border is said to be effective against the influenza virus.

**Forest Fire Death
 List Exceeds 1,200**
 The list of deaths from forest fires in the United States for the year ending September 30, 1918, has exceeded 1,200. The highest number of deaths in any one year was in 1917, when 1,200 people died.

**Young Prussian Pays
 Tribute to Adversary**
 The young Prussian has paid a tribute to his adversary, the American. He has done so by adopting many of the American customs and habits.

**Wounded Captain Expresses
 Admiration of French Courage**
 A wounded American captain has expressed his admiration for the courage of the French soldiers. He has done so in a letter to his family.

**Seattle Women Wearing
 Fine Mesh Veils**
 Seattle women are wearing fine mesh veils to ward off influenza. The veils are made of fine mesh and have a chlorine border.

**Forest Fire Death
 List Exceeds 1,200**
 The list of deaths from forest fires in the United States for the year ending September 30, 1918, has exceeded 1,200.

**Young Prussian Pays
 Tribute to Adversary**
 The young Prussian has paid a tribute to his adversary, the American. He has done so by adopting many of the American customs and habits.

**Wounded Captain Expresses
 Admiration of French Courage**
 A wounded American captain has expressed his admiration for the courage of the French soldiers. He has done so in a letter to his family.

**Seattle Women Wearing
 Fine Mesh Veils**
 Seattle women are wearing fine mesh veils to ward off influenza. The veils are made of fine mesh and have a chlorine border.

WINTER COATS
Two Very Special Lines at Interesting Prices

The Coats at \$16.50 **The Coats at \$19.75**

Are made in practical styles—all belted models of heavy flannel cloth and other gray-toned materials. Coats with large collars for warmth and comfort and large pockets, both trimmed with black velvet. Oxford gray and brown.

Crepide Chine Waists \$2.95
 Waists that are good value, shown in many shades. Some tucked and elaborated, will keep or roll collar. Some strictly tailored. White, pink, blue, black and brown.

Georgette Waists \$4.95
 Waists of absolute quality. Georgette in white, pink, lavender and navy. Some tailored styles and others simple with large collars. Blue, tan and black.

Hats at Lower Prices—Yes, Lots of Them in the Basement

Untrimmed Velvet Hats \$1.25
 Six sizes. Untrimmed velvet hats in a good assortment of styles. Black, brown, navy, blue, tan, and soft brown styles. In heavy velvet, gray, red and black.

Saturday When You Buy Shoes—Remember, in the Basement They Sell for Less
CHILDREN'S SCHOOL SHOES
 of guaranteed make, low styles, with extra high tops and good, solid leather soles.
 Size 11, to 13, at \$2.49.
 Size 13, to 15, at \$2.99.

LITTLE GENT'S SHOES \$2.95
 Good Boy Sport Shoes of heavy tan leather, with all styles, lace style. Fine for school wear.
 Size 9 to 11, at \$2.95.

MEN'S DRESS SHOES \$4.95
 A price that really ought to be good to the man who needs shoes for dress wear. Made of black leather, cap toe, English lace, with blind toe.
 Size 7 1/2 to 12, at \$4.95.

For Salads For Shortening For Frying

Douglas Oil

It's better than olive oil. It's better than lard. It's better than any other oil. It's better than any other shortening. It's better than any other frying fat.

DOUGLAS COMPANY, Cedar Rapids, Iowa
 Wholesale and Retail Dealers
 Kalamazoo Company, Seattle, Wash.

Wonderful Showing of Fine OVERCOATS and SUITS

Materials which cannot be duplicated at less than double the price we paid for them months ago. We positively save you from \$10 to \$15 on every Overcoat and Suit in this great Upstairs Shop.

COME SATURDAY
 and select from these unusual values.

\$15 to \$40

Our Showing of Young Men's Overcoats having the reputation of the most critical.

Businesses of all kinds, in regular and regular shodders, special values, \$8.00 to \$28.00.

Mackknives for men and boys. Upstairs we save you money on every Coat at \$6.00 to \$15.00.

Leather, Wool and Knitted Vests

Tailored Ready Co.
 Seattle's Largest Upstairs Clothes Shop.
 401-403 Pike Street

**New York Times >
 Noviembre 17, 1918**
https://timesmachine.nytimes.com/timesmachine/1918/11/17/98275182.pdf?pdf_rdirect=true&ip=0

EPIDEMIC LESSONS AGAINST NEXT TIME
Dr. Copeland Tells Why New York Got Off Easier Than Other Cities-- Pays Tribute to Predecessors

THE epidemic of Spanish influenza which there were only 108 new cases; has been officially declared to be there were some slight increases in the course of the past, and the city days after that; but the disease is no can now take stock of its ex- longer epidemic. Up to Nov. 14 the total ence of its kind that we have ever had, number of cases of Spanish influenza was 127,990; of pneumonia, 18,502. The every one knows. But how did the city total number of deaths reported from most it? Why were some things done influenza was 10,428; from pneumonia, and other things left undone? Did New 16,628. The highest number of deaths York's death rate compare well or ill with that of other large cities? And when over 5,200 deaths occurred from what good results, in the way of lessening influenza, pneumonia, and bronchitis, for the future, has the visitation had? The epidemic followed almost precisely in going answers to these questions the course of the epidemic of 1889 in from Dr. Royal S. Copeland, the city's Health Commissioner, the inquiry is struck first with the way in which the here we did a number of unconventional danger of infection from incoming ships was combated, and so far as can be known, negated. It was obvious that that danger was very great. "At the beginning of the Summer we organized that there was Spanish influenza going co-operation. Every function of

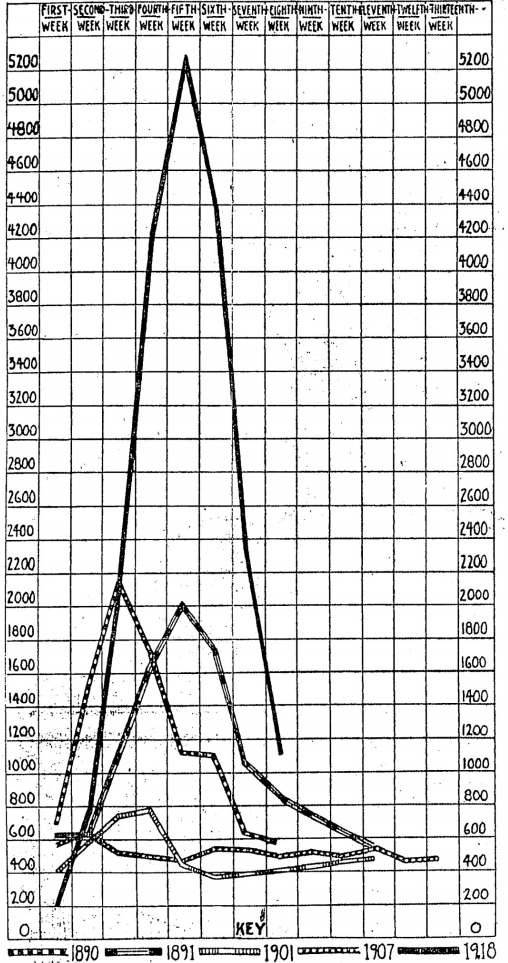
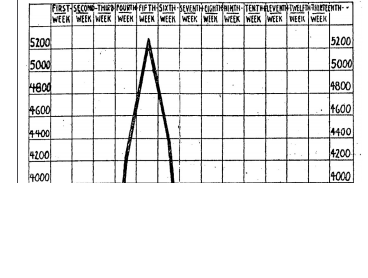


Chart Covering New York's Five Influenza Epidemics, Showing Number of Deaths Each Week from Influenza, Pneumonia, and Bronchitis While These Epidemics Raged.

> **Seattle Daily Times**
 October 18, 1918, p. 10
<https://quod.lib.umich.edu/f/flu/170flu.0010.711>



Tener perspectiva histórica: ¿por qué importa?

- No somos los primeros ni seremos los últimos. No es pesimismo. Es saber reconocer que esto forma parte de la condición humana.
- La gran pregunta es qué podemos hacer, como humanidad, para enfrentarnos a estas situaciones.
- ¿Qué podemos aprender de nuestros antepasados?
- Pensar en el pasado de forma empática implica responsabilizarnos por el futuro también.

Ejemplos de lecciones de las pandemias: <https://www.history.com/news/pandemics-lessons>



Descubrimiento de una escultura de Adriano en Turquía. Imagen BBC (2007)



Jean II le Bon (1319-1364)
Ca.1340
Óleo y hojilla de oro sobre tabla
París, Louvre



Detalle, Aliento [Breath, Detail]

1995

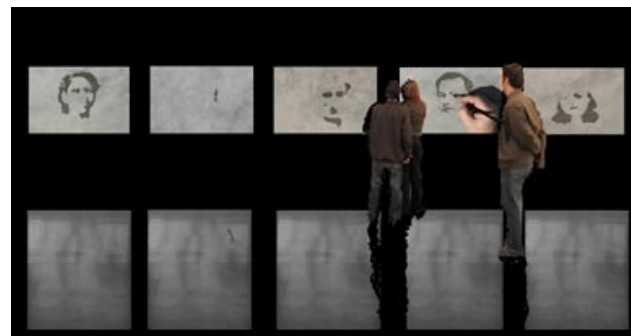
12 discos metálicos, serigrafía sobre película grasa
[12 metallic disc, silk screen over grease film]
20 cm ø cada uno [each]



Aliento [Breath]

1995

12 discos metálicos, serigrafía sobre película grasa
[12 metallic disc, silk screen over grease film]
20 cm ø cada uno [each]



Proyecto para un memorial / [Project for a memorial]

2005

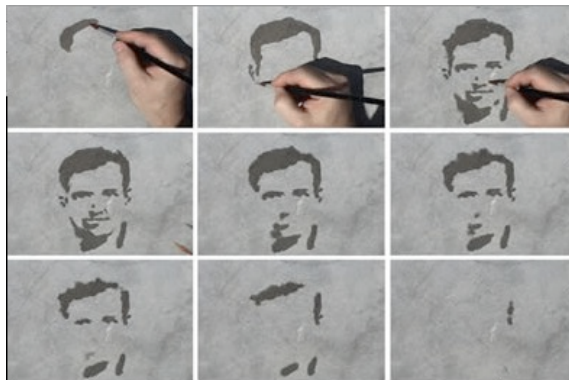
5 videos sin sonido / [5 videos without sound]
7 minutos 40 segundos cada uno [each]



Línea del destino [Line of destiny]

2006

Video sin sonido
1,54 minutos



Proyecto para un memorial / [Project for a memorial]

2005

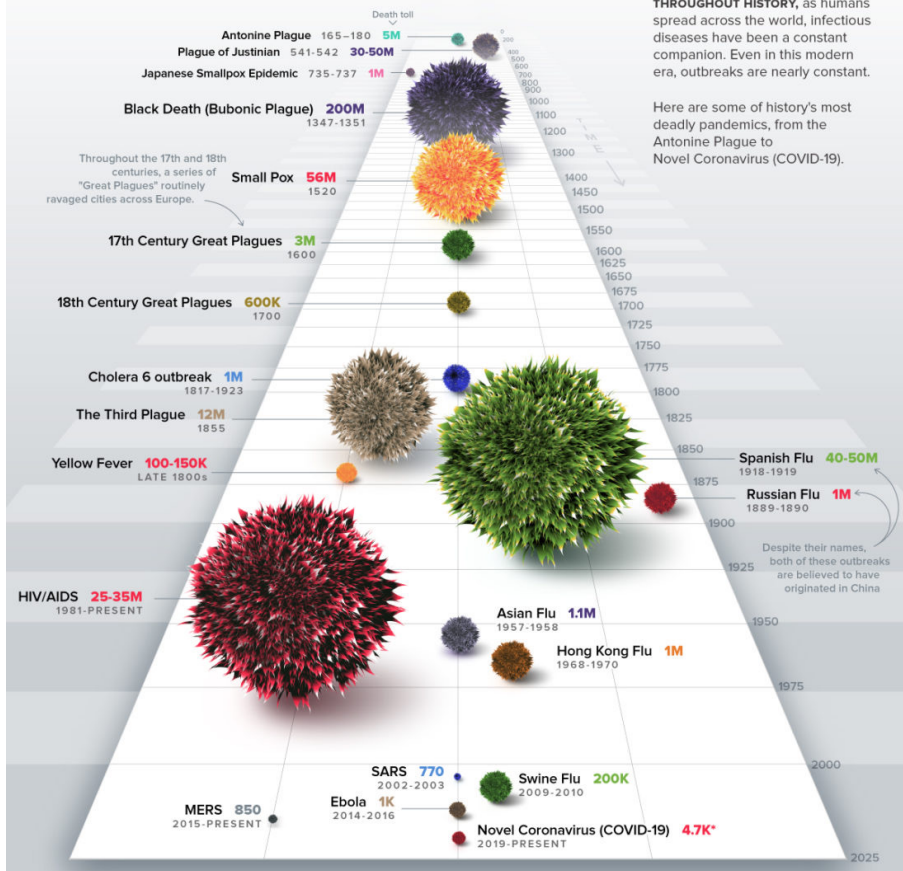
9 fotografías | impresión a color / [9 color photographs]
42 x 60 cm cada una [each]

Oscar Muñoz (Popayán, 1951)

<https://www.banrepcultural.org/oscar-munoz/protografias.html>

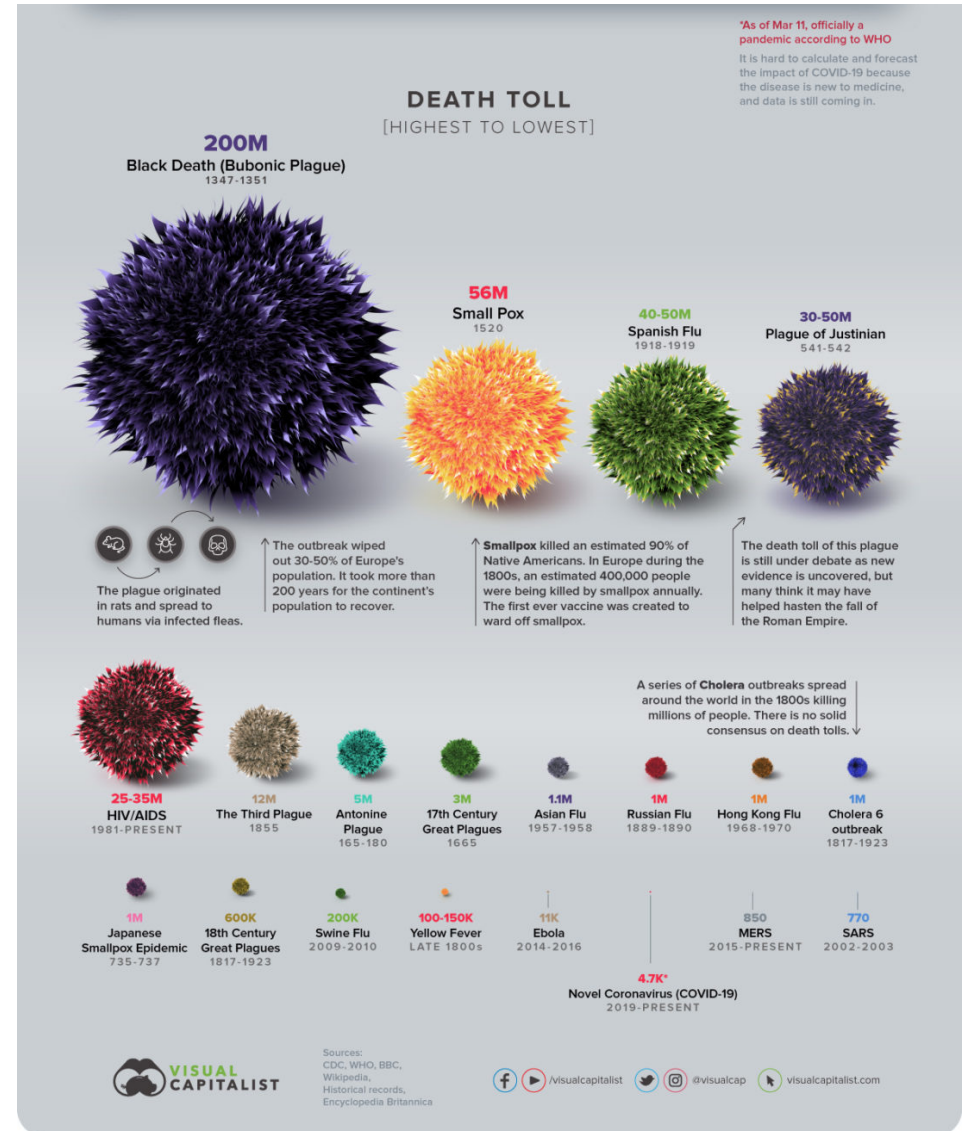
HISTORY OF PANDEMICS

PAN-DEM-IC (of a disease) prevalent over a whole country or the world.



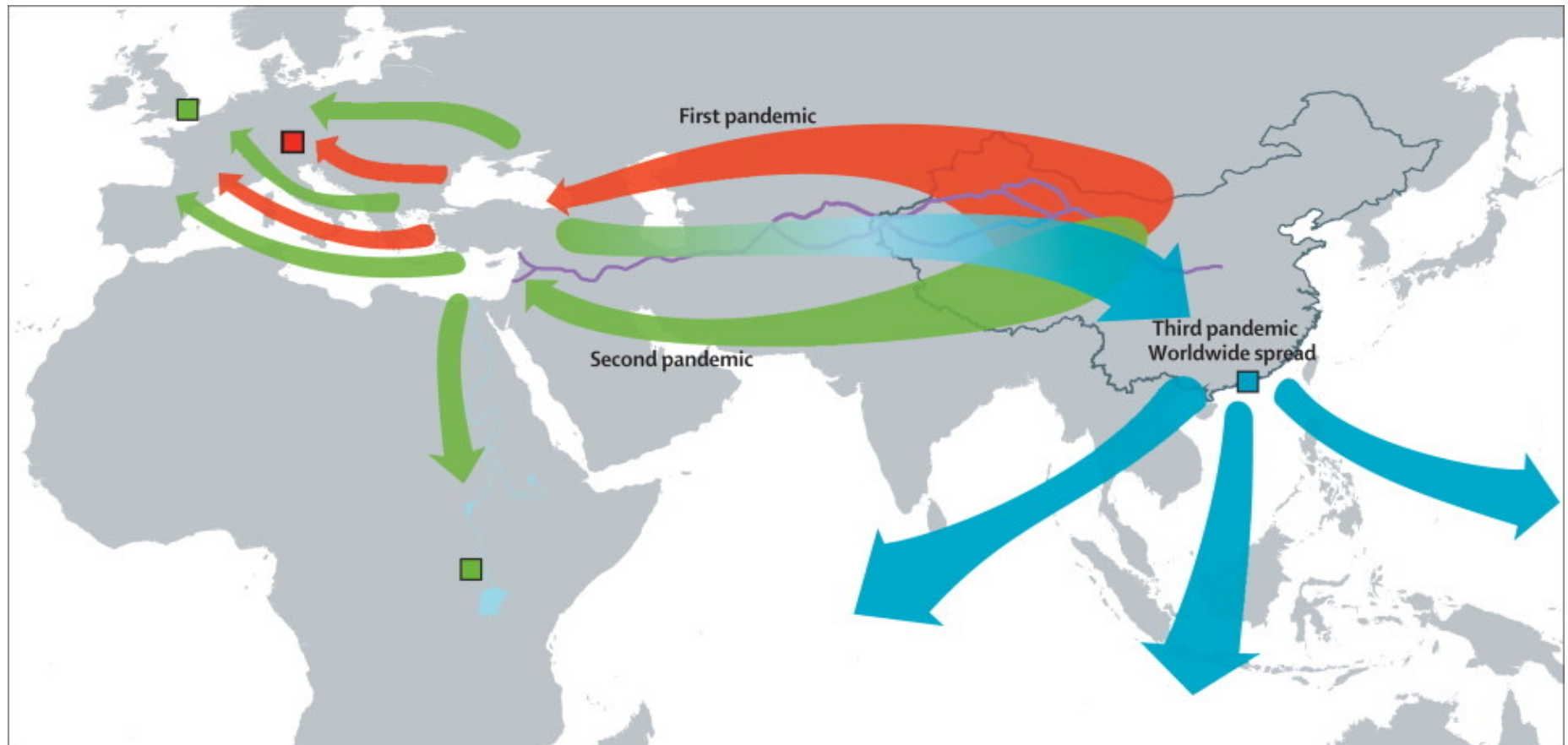
Publicado en marzo del 2020

<https://www.peterfisk.com/2020/03/a-history-of-pandemics-from-the-antonine-plague-to-black-death-spanish-flu-and-covid-19-how-disease-has-shaped-society-and-healthcare/>



Pandemias históricas y sus consecuencias (1)

- Atenas, 430 a.C. Primera pandemia **registrada**. Probablemente fiebre tifoidea. Mueren 2/3 partes de la población. Pierde la guerra Atenas. (Guerras del Peloponesio).
- Roma, 165-180 d.C. Plaga Antonina. Muere Marco Aurelio.
- Imperio bizantino, siglos 6-8. Plaga bubónica. Mueren 50 millones de personas (26% población mundial). Expansión del Cristianismo.
- Europa, siglo 11. Lepra. Nuevo diseño de hospitales. Surgen órdenes mendicantes (franciscanos y dominicos).
- Europa, 1350. Peste negra (plaga bubónica). Muere 1/3 población mundial. Vikingos dejan de explorar Norteamérica. Revolución artística. Primera legislación sobre aislamiento físico.



Plaga de Justiniano (siglos 6-8)

<https://www.thelancet.com/journals/laninf/article/PIIS1473-3099%2813%2970323-2/fulltext>





Pierart dou Tielt
“Los habitantes de Tournai entierran a las víctimas de la Peste Negra”. *Tractatus quartus*, ca.1353
Miniatura, BNF Ms.13076-13077, f.24v

<https://news.fsu.edu/news/expert-pitches/2020/03/26/fsu-professor-available-to-comment-on-the-black-death-and-its-lessons-for-covid-19/>

[Audio](#)



Drone footage shows mass burials in New York.

Fecha: 10 de abril de 2020

Fuente: <https://www.bbc.com/news/world-us-canada-52241221>

Pandemias históricas (2)

- América, después de 1492. Viruela y sarampión con llegada de españoles. Muere 90% de la población indígena del continente. Entre siglos 16 y 17, mueren 60 millones de personas. Posible afectación del clima: dejar de cultivar tierra > baja CO₂ en la atmósfera > enfriamiento del planeta (mini edad de hielo).

<https://www.history.com/news/climate-change-study-colonization-death-farming-collapse>

Pandemias históricas (3)

- “Gripa española” (H1N1) 1918-1920. Mueren 50 millones de personas (más que en la primera Guerra Mundial). Tres olas. Ancestro de las influencias pandémicas de los siglos 20 y 21. No ha desaparecido: relacionada con gripa aviaria y gripa porcina. 🐣 > 👧👦 > 🐷
 - 1957 🐣 + 🐧 = H2N2. Mueren 1 millón de personas.
 - 1968 (“Gripa Hong Kong”) H3N2. Mueren 1 millón de personas.
 - 2009 (“Gripa porcina”) 🐷 > 👧👦. Mueren 300.000 personas.
 - <https://www.history.com/news/1918-flu-pandemic-never-ended>

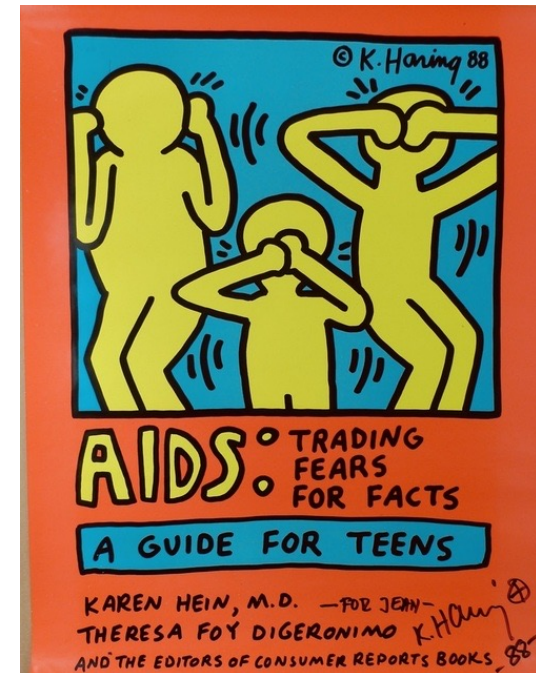
Según el [Dr. Jeffery Taubenberger](#) (especialidad en arqueovirología), quien mapeó el genóma de la gripa de 1918 a finales de los años 1990, “aún estamos viviendo en la era pandémica de 1918, 102 años más tarde...”

Pandemias históricas (3)

- HIV / Sida. Desde 1981. Han muerto 35 millones de personas. Aunque hay tratamientos antivirales, no hay cura.



Keith Haring (1958-1990)



Pandemias que nos han transformado

Contar historias: arte y literatura



Waterhouse
"Una historia del Decamerón"
1916
Óleo sobre tela
National Museums Liverpool

- Boccaccio, El Decamerón (1351)
- Shakespeare, Macbeth y otras obras (1606-1610)
- Artistas: Holbein, Ticiano, Munch, Klimt, Schiele.

<https://www.newyorker.com/culture/cultural-comment/what-shakespeare-actually-wrote-about-the-plague>

<https://www.bbc.com/culture/article/20200514-how-art-has-depicted-plagues>

Ciencia

- Isaac Newton, la ley de la gravedad (1665-67) *#estudiarencasa*

<https://www.washingtonpost.com/history/2020/03/12/during-pandemic-isaac-newton-had-work-home-too-he-used-time-wisely/>



Descendiente del árbol de Newton. National Institute of Standards and Technology, Gaithersburg Md.

Arquitectura después de 1900

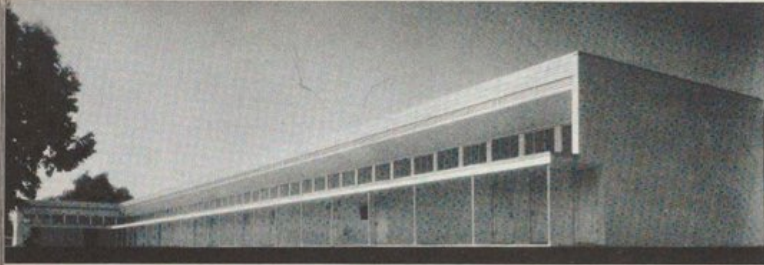
- Baños
- Closets
- Aire fresco y espacios abiertos
- Espacios verdes en la ciudad
- Cerámicas blancas en baños, hospitales y metros
- Políticas estatales de salud pública e higiene (después de la “Gripa española”)



<https://www.architecturaldigest.com/story/subway-tile-design-in-epidemics>

<https://whyy.org/articles/how-a-pandemic-inspired-your-bathroom/>

<https://slate.com/business/2020/04/coronavirus-architecture-1918-flu-cholera-modernism.html>



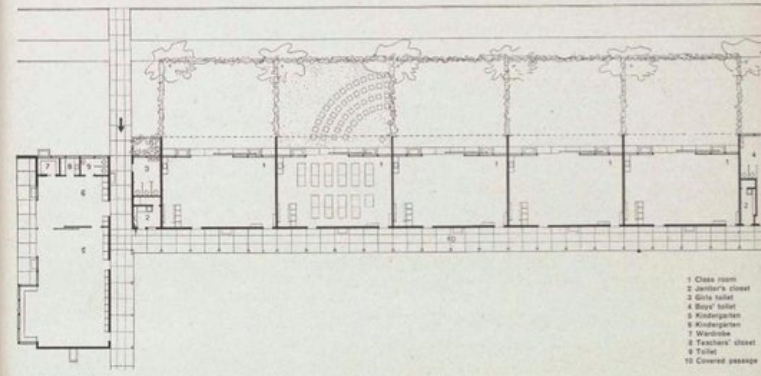
Richard J. Neutra: Experimental School, Bell Avenue at Bear Avenue, Los Angeles, California. 1935

Built as an addition to an existing school, this carefully studied arrangement of classrooms and kindergarten has been recognized as a classic in its field.

Each classroom gets light and air from two sides, through high windows over the covered passage and through a great wall of glass at the west, where sliding doors open to an outdoor class area. Walls and roof project to exclude rain, over-abundant sunlight and the noise of neighboring classrooms, and external canvas sunblinds can give additional protection. The kindergarten, however, deliberately faces the south and the sun.

The light wood frame was specially designed for earthquake safety, and the deep wood-truss roof is ventilated by louvered openings in its tapered overhangs.

The horizontality of the east side of the building, emphasized by the lightly supported canopy of the passage, contrasts with the west side, where classrooms are expressed as a repetition of wholly distinct units.



Floor plan 1:300

- 1. Class room
- 2. Janitor's closet
- 3. Girls toilet
- 4. Boys' toilet
- 5. Kindergarten
- 6. Kindergarten
- 7. Washbasin
- 8. Teachers' closet
- 9. Toilet
- 10. Covered passage

“Luz y aire”

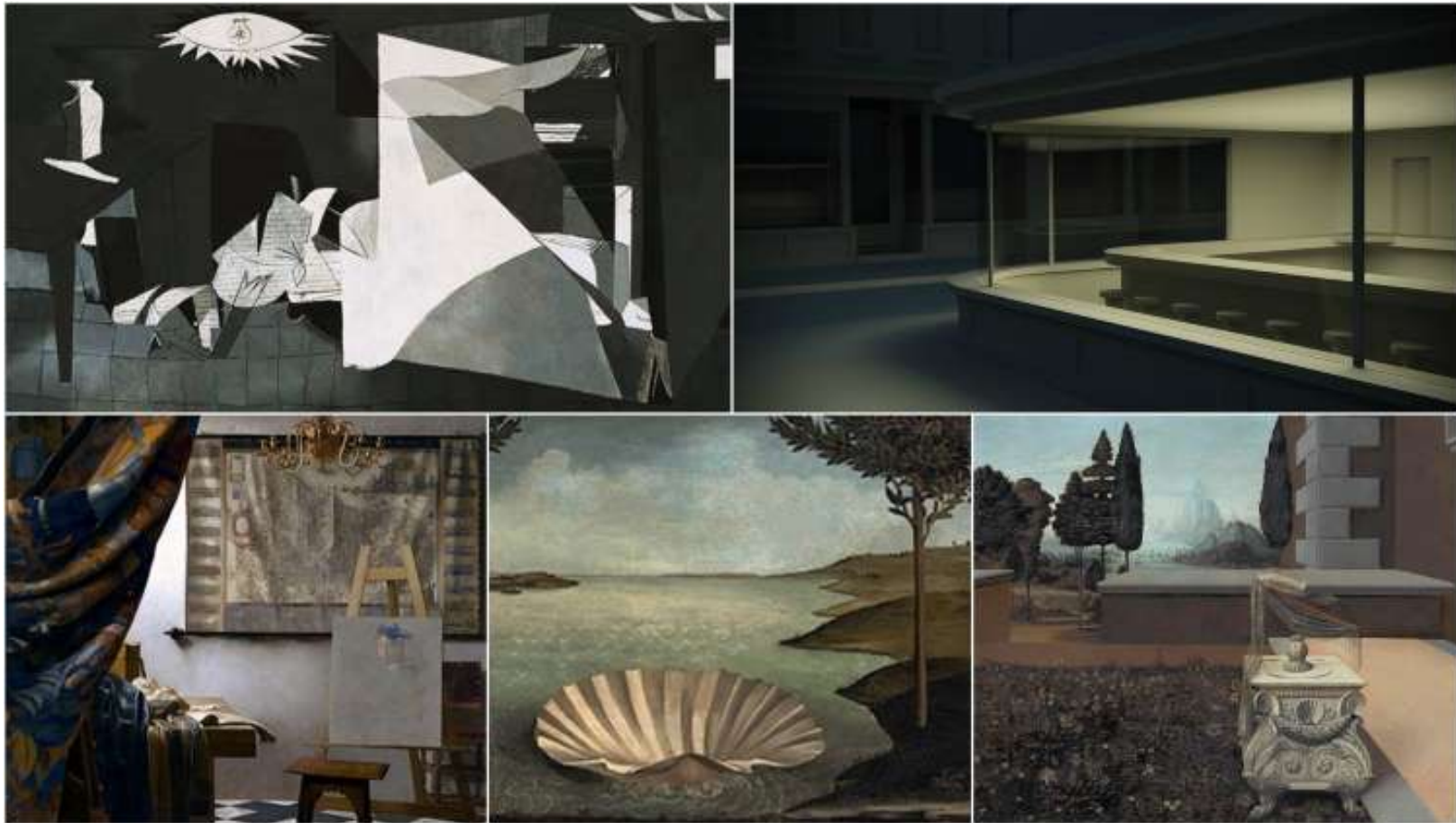
<https://drawingmatter.org/richard-j-neutra/>

“Buchette del vino” (ventanitas para el vino)



<https://buchettedelvino.org/home%20eng/news-so.html>

“Vaciar obras” Campaña #quédateencasa 2020



Creatividad y humor para enfrentar la dificultad





GALERÍA C20 - ARTE SIN CUARENTENA

La galería C20 tiene como objetivo presentar de manera virtual trabajos, proyectos y procesos de estudiantes, egresados y profesores de arte de la Universidad de los Andes durante el tiempo de cuarentena causada por la pandemia del COVID-19.

VER MÁS GALERÍA VIRTUAL



GALERÍA C20



CONVOCATORIA GALERÍA C20



MUESTRA VIRTUAL
Trabajos, proyectos y procesos de creación realizados en cuarentena

ABIERTA PARA
Estudiantes egresados y profesores de Arte de la Universidad de los Andes

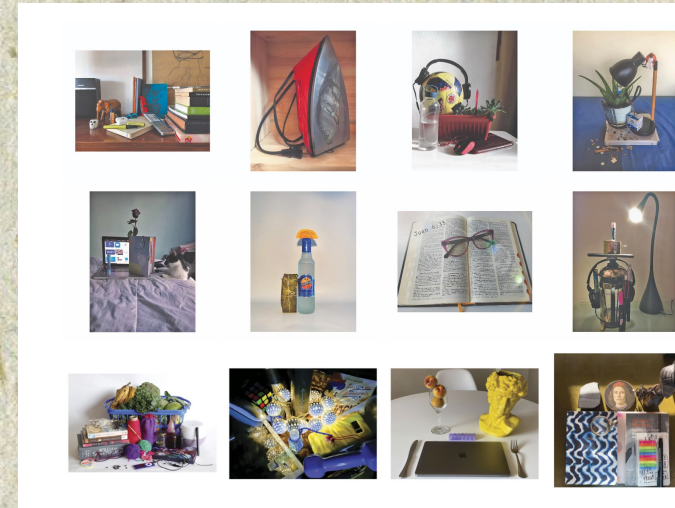
Más información en facart.es/convocatoria-c20

Universidad de los Andes | Calle 140, Bogotá, Colombia | Teléfono: +57 (01) 254 2200 | www.uniandes.edu.co

<https://arte.uniandes.edu.co/exposiciones-actividades/exposiciones-en-linea/galeria-virtual-c20-arte-sin-cuarentena/>



Francia y Juliana Villabona
(2020).



<https://facartes.uniandes.edu.co/decanatura/cuales-son-sus-objetos-esenciales/>



Ruby Silvius (1957)
363 días de té
2015
NY

Maria Antonia Fernández
Abecedario de cuarentena
2020
Acuarela sobre papel
28 x 21 cm



Fotografía los
rincones de tu casa



Germina un
aguacate



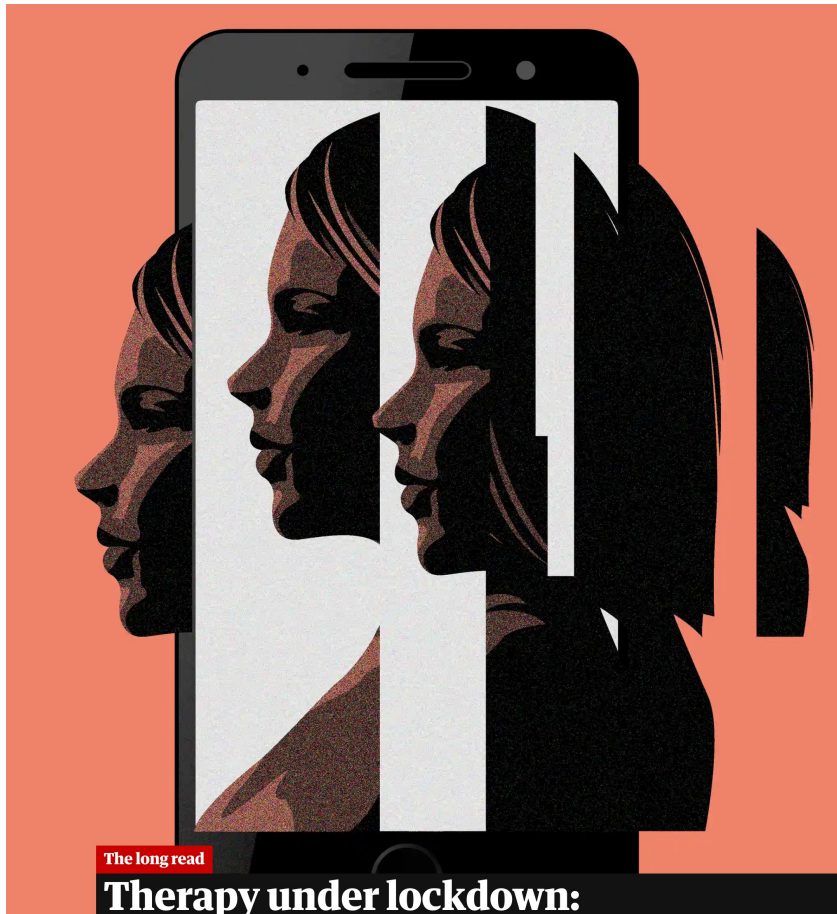
Kilometra tu
casa



Arma un rompecabezas

Nuevas formas de ver y relacionarnos





“I’m already getting accustomed to it; the human capacity for adapting is remarkable. But the one thing I can’t get used to, so far anyway, is the way my patients’ faces appear in this **simulacrum of intimacy**. I may have sat for hours with them, watched their faces contort in anguish, or beam in satisfaction. I may have searched out their eyes, tried to bring them back into contact from their safe haven on the ceiling. I may have thought I knew every inch of these faces, and no longer even needed to ask what their expressions meant

I wasn’t wrong, not exactly. I just didn’t realise that all that searching was done against so many tempting distractions: the catalpa trees outside my window, the paintings on my wall, the little corner of ceiling tile that was chipped 30 years ago and has never been repaired. I could swivel in my chair, adjust my posture, look at the clock, and then back to the face. Now that it has been reduced to a flat image in the middle of a flat screen, and I have no easy elsewhere to look, I’m realising that **half the work was the struggle to behold those faces**, and half the satisfaction was succeeding in wrestling attention to the task at hand. And **maybe half the treatment was their observing that struggle, feeling the love in it.**”

<https://www.theguardian.com/society/2020/apr/23/therapy-during-coronavirus-pandemic-lockdown-psychoanalysis-freud>

Referencias

- Líneas de tiempo:
 - <https://www.history.com/topics/middle-ages/pandemics-timeline>
 - <https://www.peterfisk.com/2020/03/a-history-of-pandemics-from-the-antonine-plague-to-black-death-spanish-flu-and-covid-19-how-disease-has-shaped-society-and-healthcare/>
- Distanciamiento social: <https://www.history.com/news/quarantine-black-death-medieval>
- Formas innovadoras de protección: <https://www.history.com/news/flu-masks-protection-photos>
- Resistencias: <https://www.history.com/news/1918-spanish-flu-mask-wearing-resistance>
- Campañas: <https://www.history.com/news/1918-pandemic-public-health-campaigns>
- Colegios: <https://www.history.com/news/spanish-flu-schools-new-york-chicago>
- Reflexiones sobre la muerte: <https://cienciassociales.uniandes.edu.co/opinion/covid-19-y-el-tabu-de-la-muerte/>